



Pa

P A R E D E S
Consultores Ambientales

INDEX

History	1
About us	
Vision	2
Mission	2
Organization Chart	2
Our team	3
Services	
PCa Environment	4
PCa Design	5
PCa Metric	6
Projects Portfolio	7
Our clients	8

Paredes Environmental Consultants, SRL.
Caonabo Av., No. 10, Irene Plaza, Local 205.
Santo Domingo, Dominican Republic.

T: 809-532-5482
E: info@pcambientales.com
W: www.pcambientales.com

HISTORY

Paredes Environmental Consultants PCa - Paredes Consultores Ambientales- is a company based in the Dominican Republic, legally constituted in 2004 and specializing in the management, control and education on issues related to the environment.

Under the registration number 130-04 of environmental services providers of the Dominican Ministry of Environment and Natural Resources, **PCa** provides services nationwide, developing environmental impact studies for projects related to: roads, dams, mining aggregates, aqueducts, buildings, tourism, energy, to name a few. We have also served as a partner of major international companies such as Entrix and Elsamex International.

Over the last 5 years of work, **PCa** has effected important changes in the level of internal organization, from the diversification of the services to the re-branding of corporate image.

Under the new name, **PCa** has three divisions:

- 1. PCa Design:** It includes all the services related to the study, design, supervision and management of civil works projects as well as services of architectural and urban design along with Geographic Information Systems.
- 2. PCa Environment:** such as the traditional services of management, monitoring and environmental education.
- 3. PCa Metrics:** This department is responsible for conducting environmental measurements of air quality, noise and water, and equipment rentals.

ABOUT US

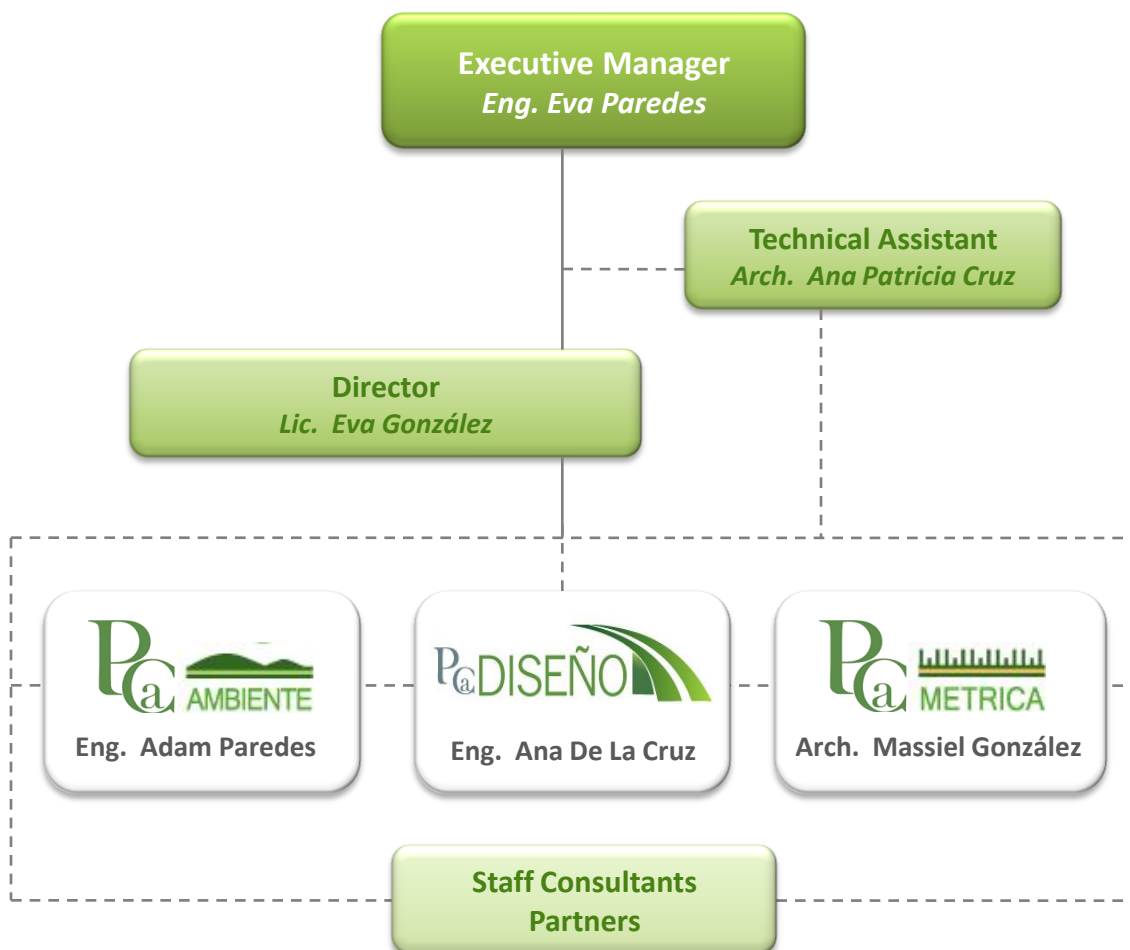
Vision

We are recognized as a high-level consultancy operation that promotes sustainable development in Dominican Republic and throughout Latin America.

Mission

Providing environmental solutions and engineering for both, the private and the public sector, including national, regional, and international agencies.

Organization Chart



OUR TEAM

Eva Paredes, Executive Manager. Hydraulic Civil Engineer with environmental expertise. She has worked as a consultant for the Inter-American Development Bank and the World Bank on environmental matters. She has extensive experience in the coordination, development and implementation of environmental studies.

Eva Mariela González, Director. Degree in Business Administration and Master in Environmental Technology. She has experience in planning, organization and analysis of socio-environmental information.

Adam Paredes, Environmental Division Manager. Agronomist specializing in thematic communication. Extensive experience in designing and implementing co-management plans of protected areas.

Ana Maria de la Cruz, Design Division Manager. Civil Engineer specializing in transport routes. She has over 23 years of experience in streets and roads design nationwide.

Massiel Gonzalez, Metrics Division Manager. Architect specializing in Sustainable Urban Development.

Ana Patricia Cruz, Technical Assistant. Architect. Experience in cartographic mapping.

Consultants

Adam A. Paredes, Graphic Designer.

Elisabet Peralta, Hydraulic Engineer.

Jesús Herasme, Sociologist.

Juan Llamacho, Agronomist Engineer.

Leonardo Liriano, Agronomist Engineer.

María Calzadilla, Geologist.

Maria Santana, Economist.

Mauricio Otálora, Environmental Engineer.

Teodoro Clase, Botanical.

Yocasta Aquino, Civil Engineer.

SERVICES



Aim

Giving answers to the environmental needs to promote the implementation of the principles of sustainable development and eco-efficiency.

Environmental management

- Environmental Management Systems.
- Environmental Studies: Environmental Impact Assessment, Environmental Impact Statement, Environment Report.
- Environmental viability analysis.
- Flora and fauna studies.
- Technical support in the processing of plans and projects.
- Analysis and environmental diagnostics.
- Municipal inventory of industrial activities.
- Environmental monitoring programs.
- Environmental Audits.
- Archaeological excavations.
- Corrective action and environmental sanitation plans.

Control and environmental quality

- Environmental Control Systems.
- Prevention and control of environmental risks and occupational hazards.
- Measurements and monitoring of pollutants.
- Environmental noise maps.
- Noise prediction models.
- Development and application of mathematical models for prediction of pollutant concentrations and pollutant levels.

Environmental education

- Training of environmental responsible.
- Environmental education programs design.
- Municipal environmental education campaigns.
- Educational and informational projects.
- Workshops, lectures, courses and seminars.
- Environmental interpretation programs.
- Natural areas information programs.
- Publications.

Socio-economic studies

- Community consultations.
- Civic participation programs.
- Public consultations.
- Organization and implementation of socio-economic surveys.
- Gender studies.

Aim

Offering integrated solutions in the field of study, design, supervision and management of civil works projects to reduce impacts to the environment.

Tender

- Technical documentation investment at the preliminary plan, basic and detailed engineering.
- Technical - legal documentation for works tender process.
- Technical - economic studies: pre-feasibility and viability studies for investment projects.

Design of civil works

- Structural calculations.
- Hydrological and hydraulic studies.
- Applied geological research.
- Technical expertise and specialized technical assistance.

Supervision of civil works

- Project management and civil works contracts.
- Physical, technical, financial monitoring for investment projects.

Architectural and urban design

- Architectural Design.
- Landscape integration studies.
- Perspectives: 3D modeling, rendering.

Geographic Information Systems

- 3D Mapping.
- Calculation for soil movement.
- Management of satellite images.
- Land use planning.
- Socio-economic Planning.
- Transportation Planning.

Aim

Providing solutions based on quantitative data for taking decisions in the areas of civil engineering, environmental and occupational.

Environmental Measurements

Air

Suspended Particles PM10, PM2.5, Total PST.
Combustion gases O₂, CO₂ and CO emissions.
SO₂, NO_x, NO₂, NO and VOCs emissions.
Specific gases.
Determination of opacity or leaks or chimneys.
Chlorine, chlorides, arsenic, ammonia.
Heavy metals (lead, Cadmium, Copper, Zinc, Chromium).
Biocides organochlorine and organophosphorus.
Potential Hydrogen (pH).

Water

Monitoring of physical and chemical parameters: Temperature, pH, conductivity, dissolved oxygen, salinity, total dissolved solids, resistivity.

Sound

Ambient sound measurement.
Measurement of sound or work environment.
Vibration.

Topography

Land surveying.
Support for using GPS photogrammetric.
Building: Cu emptied measurements, stakeout and / or control of foundations and structures.
Topographic maps.
Structures: roads, highways, technical assistance, housing estates.
Measurements of movements in mining.

Equipment Rental

Sound meters.	Total Station.
Anemometers.	GPS.
Particulate meters.	Horizontal and Vertical Laser Level.
Gas Measuring.	Electronic theodolite.
Optical Level.	

PROJECTS PORTFOLIO

Design

- 2008.** La Isabela-Estero Hondo-La Ensenada-Punta Rucia Road reconstruction and construction. Puerto Plata, Dom. Rep.
- 2008.** El Papayo-Estero Hondo Road reconstruction. Puerto Plata, D. R.
- 2008.** Road and drainage design Los Cabos. María Trinidad Sánchez, D. R.
- 2006.** Road Design Villa Bao Industrial Zone. Santiago, D. R.
- 2006.** Pedernales-El Manguito-Aguas Negras Road reconstruction and construction. Pedernales, Dom. Rep.

Supervision

- 2009.** Tourist Road San Marcos Abajo-San Marcos Arriba-Cruce Cupey-Teleférico reconstruction. Puerto Plata, D. R.
- 2008.** Manolo Tavárez Justo-San Marcos Abajo Road. Puerto Plata, Dom. Rep.
- 2008.** San Marcos Arriba-Teleférico-Cupey Road. Puerto Plata, D. R.

Environmental Impact Study

- 2011.** Bávaro-Uvero Alto-Miches-Sabana de la Mar Road. MOPC, ODEBRECHT. La Altagracia, El Seibo, Hato Mayor, Dom. Rep. (In process).
- 2010.** Emergency Works for the Reconstruction of the El Río-Jarabacoa Road. MOPC, ODEBRECHT. La Vega, Dom. Rep.
- 2010-Actual.** Environmental Impact Studies of the stretches of highway that VIADOM Project includes. MOPC, DOVICOM, Geo Consult. Dom. Rep.
- 2009.** Duarte Corridor construction. Santo Domingo, D. R.

Environmental Impact Declaration

- 2009** Construction, reconstruction and improvement Jánico-Jarabacoa Road.
- 2009.** Haina-Nigua-Nizao variant.
- 2008.** Macasías slaughterhouse.
- 2007.** Construction of New Access Road to Bainsa. San Cristóbal. D. R.
- 2006.** Reconstruction of Yamasá Municipal Slaughterhouse. Monte Plata. D. R.
- 2005.** Atiemar Towers. Prado Universal Corporation. Santo Domingo, D. R.
- 2005.** South multiple aqueduct. Barahona, Bahoruco e Independencia, D. R.
- 2005.** Extraction Projects: Los Guineos Mine, San Francisco Mine, Colo Mine. Hermanos Yarul T. & Co. C. por A. Dom. Rep.
- 2004.** Containment Wall Construction , Nizao Coast. Refidomsa. Peravia, D. R.
- 2004.** Nizao Terminal access road. REFIDOMSA. Peravia, D. R.

Environmental Monitoring

- 2009-Actual.** Autopista Del Coral. ODEBRECHT. La Romana, Dom. Rep.
- 2009-Actual.** Corredor Duarte Construction. MOPC, Consorcio Corredor Duarte. Sto. Dgo., Dom. Rep.
- 2008-2006.** San Cristóbal - Baní Road construction.
- 2006-Actual.** Asphalt Emulsion Plant. ELSAMEX, S. A. San Cristóbal. D. R.
- 2006-Actual.** Carelia Mining Concession. ELSAMEX, S. A. La Altagracia. D. R.
- 2006.** Torres Margot Construction.
- 2005-Actual.** La Noria Mining Concession. Agregados Orientales, S.A. Dom. Rep.

Environmental Report

- 2008.** Carelia Asphalt Plant. ELSAMEX, S. A. Dom. Rep.
- 2005.** Report and PMAA of Los Cacaitos Caliche Mine Project. Ingeniería e Inversiones José, S.A. María Trinidad Sánchez.
- 2002.** MALESPIN Emulsion Plant.
- 2002.** Environmental Report Power Plant in Haiti. PCa - Entrix-Basic Energy.

Others

- 2005.** Environmental and Social Implications Study, Dam over Haina River.

OUR CLIENTS

Agregados Orientales, S.A.

CEMEX Dominicana.

COINDISA.

Corporación de Fomento Industrial.

ELSAMEX, S.A.

EPSA LABCO.

GEOCONSULT.

Grupo MALESPIN.

Grupo Modesto.

Hermanos Yarul T. & Co.

Imbert Domínguez y Asociados.

Ingeniería E Inversiones José, S.A.

MENDAR.

ODEBRECHT.

PARME-ONFED.

Prado Universal Corporation.

Proyectos Viales CD, S.A.

Refinería Nacional Dominicana.

Secretaría de Estado de Turismo.

SNC LAVALIN.

The Louis Berger Group.